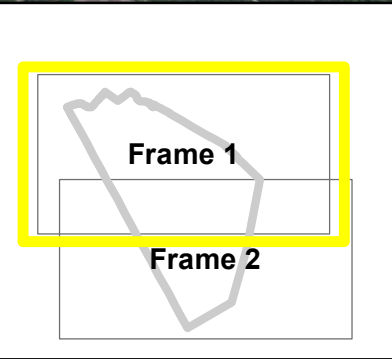
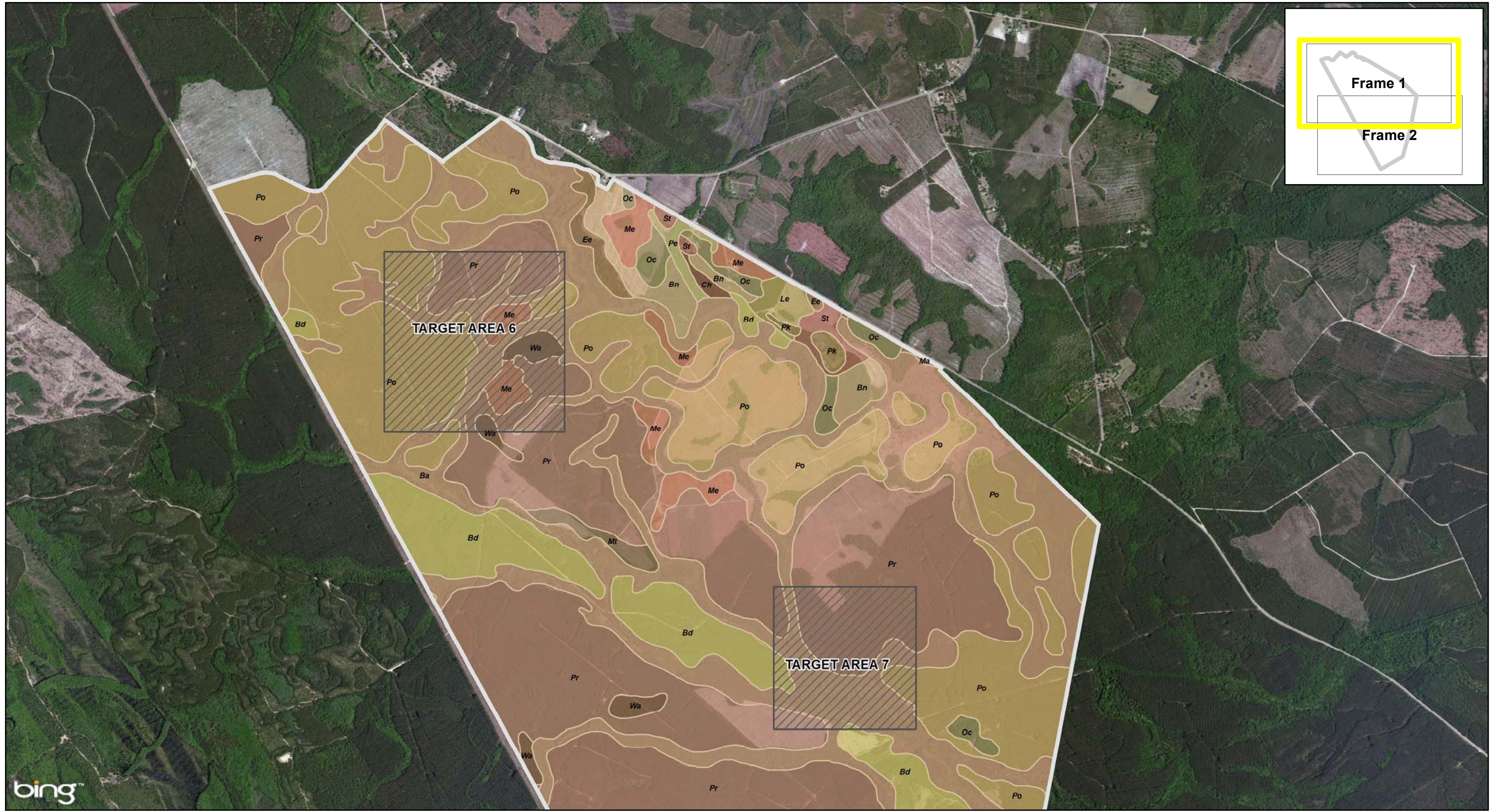


Appendix K

Soil Maps

This page left blank intentionally.



- Acquisition Area
- Target Area
- Counties

- Ba-Bayboro loam
- Bd-Bladen fine sandy loam
- Bn-Blanton sand, 0 to 3 percent slopes
- Ch-ChIPLEY sand, 0 to 4 percent slopes
- Ee-Ellabelle loamy sand

- Le-Leafield loamy sand
- Ma-Mandarin fine sand
- Me-Mascotte fine sand
- Mt-Meggett fine sandy loam
- Oc-Ocilla loamy fine sand

- Pe-Pelham loamy sand
- Pk-Pits
- Po-Pooler fine sandy loam
- Pr-Pooler-Bladen complex
- Rb-Riceboro loamy fine sand

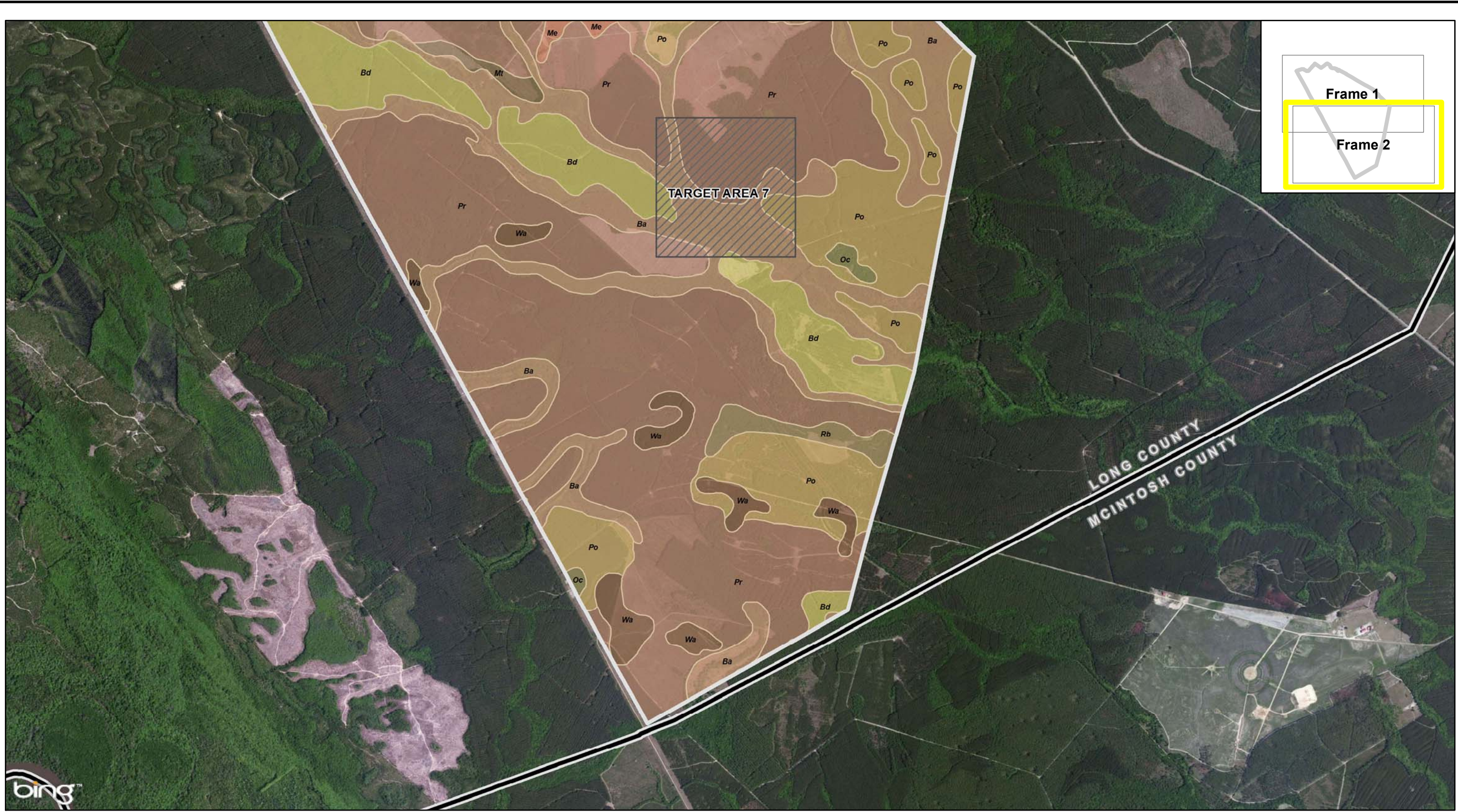
- St-Stilson loamy sand
- Wa-Wahee sandy loam



Appendix K
Acquisition Area 1A Soils
Frame 1
 Townsend Bombing Range
 McIntosh and Long Counties, Georgia

Source: NRCS 2002a, Based on Lusk 2009, McFadden 2011

This page left blank intentionally.



- Acquisition Area
- Target Area
- Counties

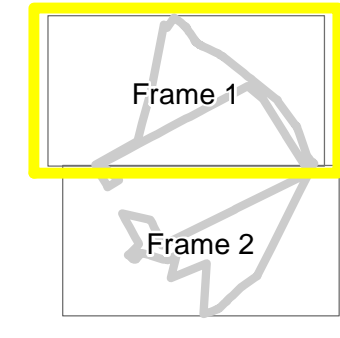
- | | | | |
|--|----------------------------|-----------------------------|-----------------------|
| Ba-Bayboro loam | Le-Leefield loamy sand | Pe-Pelham loamy sand | St-Stilson loamy sand |
| Bd-Bladen fine sandy loam | Ma-Mandarin fine sand | Pk-Pits | Wa-Wahee sandy loam |
| Bn-Blanton sand, 0 to 3 percent slopes | Me-Mascotte fine sand | Po-Pooler fine sandy loam | |
| Ch-ChIPLEY sand, 0 to 4 percent slopes | Mt-Meggett fine sandy loam | Pr-Pooler-Bladen complex | |
| Ee-Ellabelle loamy sand | Oc-Ocilla loamy fine sand | Rb-Riceboro loamy fine sand | |



Appendix K
Acquisition Area 1A Soils
Frame 2
 Townsend Bombing Range
 McIntosh and Long Counties, Georgia

Source: NRCS 2002a, Based on Lusk 2009, McFadden 2011

This page left blank intentionally.



- Acquisition Area
- Target Area
- Counties

- Ba-Bayboro loam
- Bd-Bladen fine sandy loam
- BhA-Bayboro clay loam
- BJA-Bladen loam and clay loam
- BkA-Bladen-Coxville fine sandy loams
- DmA-Dunbar fine sandy loam, 0 to 2 % slopes

- EoA-Eulonia-Fairhope fine sandy loams, 0 to 2 % slopes
- EpA-Eulonia-Fairhope loamy fine sands, thick surfaces, 0 to 2 % slopes
- LrA-Leon fine sand
- LuA-Lynchburg loamy fine sand, thick surface, clayey substratum, 0 to 2 % slopes
- NOTCOM-Not Complete
- ObA-Ona fine sand

- Oc-Ocilla loamy fine sand
- PeA-Plummer sands
- Po-Pooler fine sandy loam
- Pr-Pooler-Bladen complex
- Rb-Riceboro loamy fine sand
- Wa-Wahee sandy loam

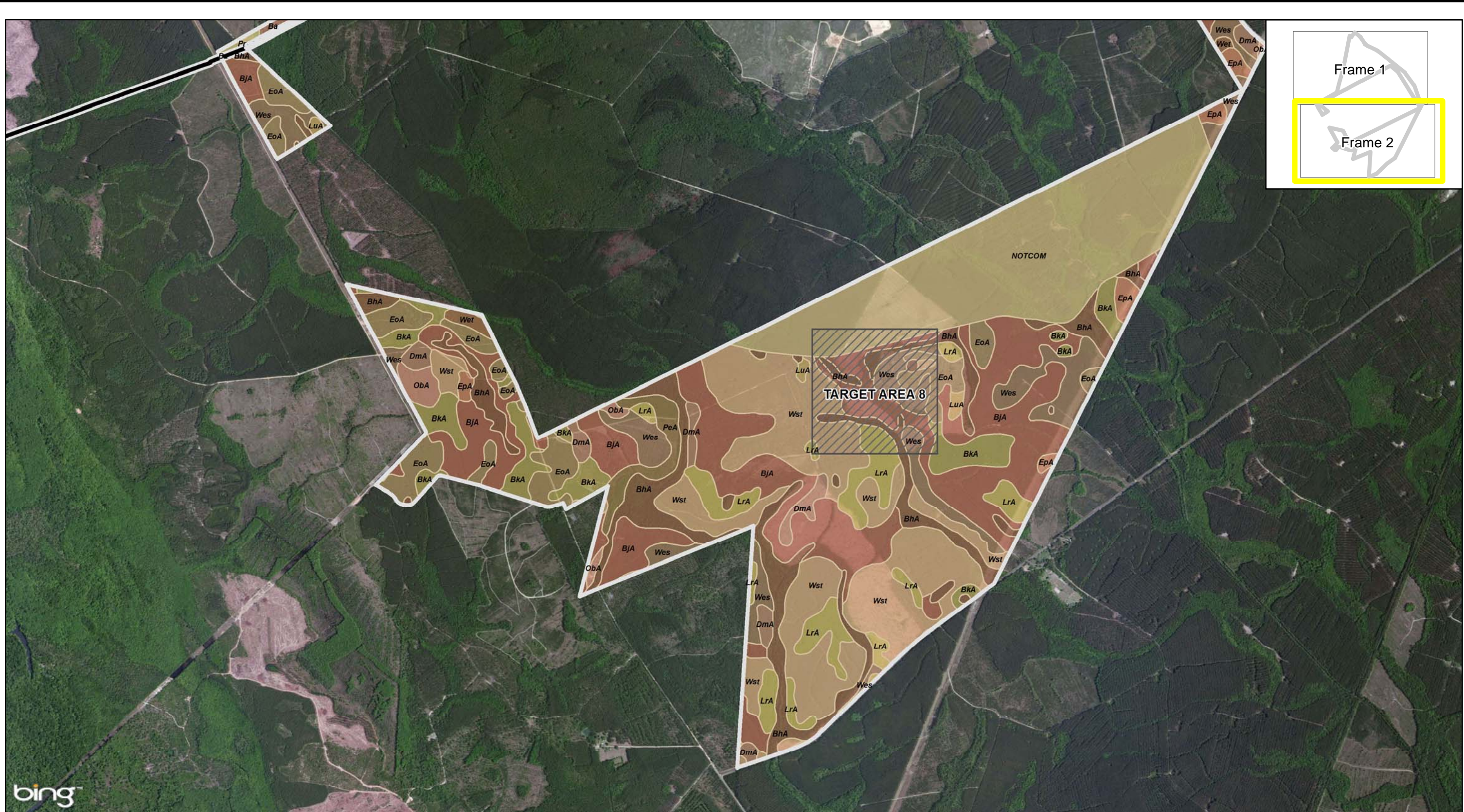
- Wes-Weston loamy fine sand
- Wet-Weston very coarse sand
- Wst-Weston loamy sand, thick surface



Appendix K
Acquisition Area 1B Soils
Frame 1
 Townsend Bombing Range
 McIntosh and Long Counties, Georgia

Source: NRCS 2002a, Based on Lusk 2009, McFadden 2011

This page left blank intentionally.



- Acquisition Area
- Target Area
- Counties

- Ba-Bayboro loam
- Bd-Bladen fine sandy loam
- BhA-Bayboro clay loam
- BJA-Bladen loam and clay loam
- BkA-Bladen-Coxville fine sandy loams
- DmA-Dunbar fine sandy loam, 0 to 2 % slopes

- EoA-Eulonia-Fairhope fine sandy loams, 0 to 2 % slopes
- EpA-Eulonia-Fairhope loamy fine sands, thick surfaces, 0 to 2 % slopes
- LrA-Leon fine sand
- LuA-Lynchburg loamy fine sand, thick surface, clayey substratum, 0 to 2 % slopes
- NOTCOM-Not Complete
- ObA-Ona fine sand

- Oc-Ocilla loamy fine sand
- PeA-Plummer sands
- Po-Pooler fine sandy loam
- Pr-Pooler-Bladen complex
- Rb-Riceboro loamy fine sand
- Wa-Wahee sandy loam

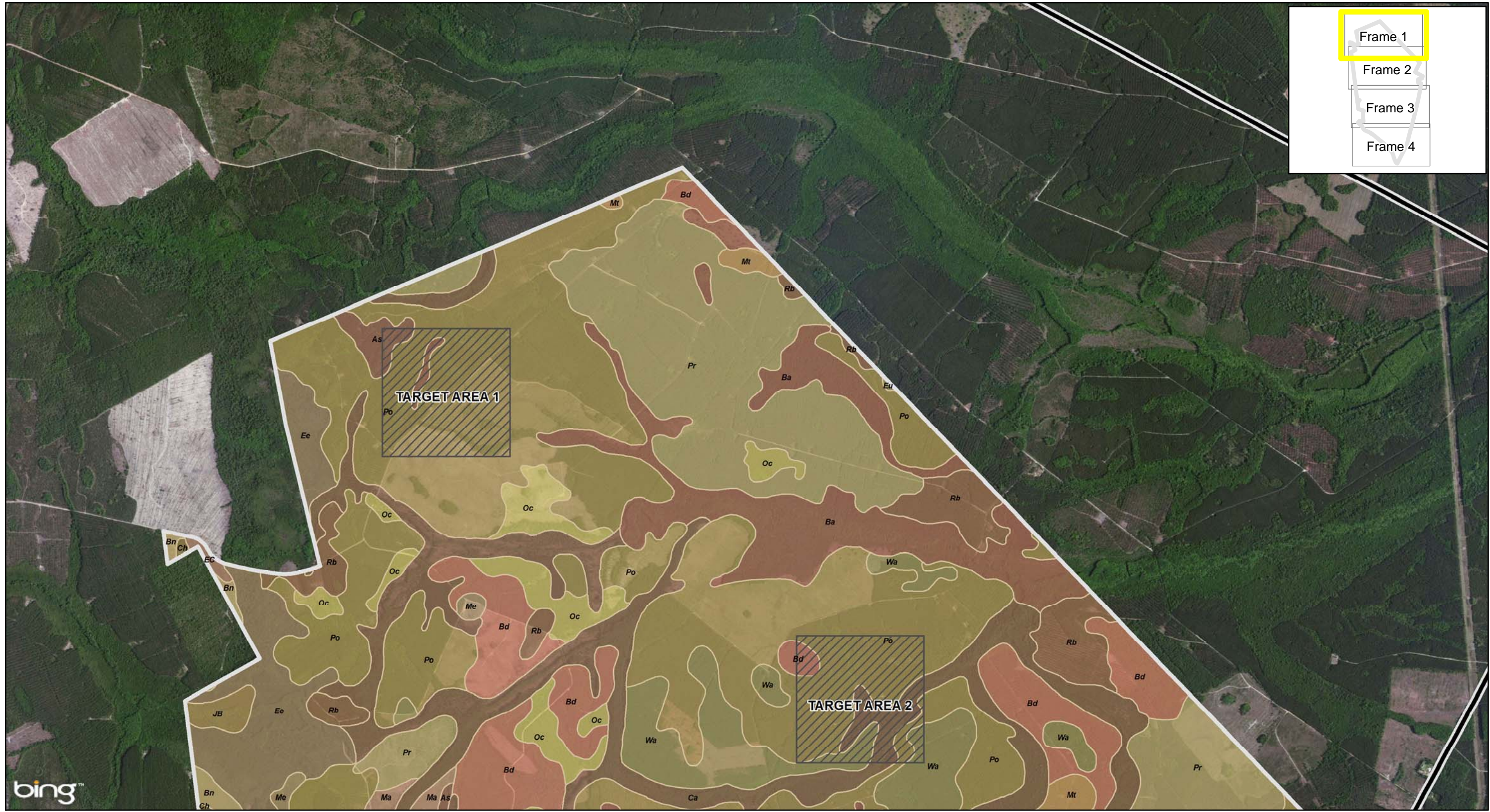
- Wes-Weston loamy fine sand
- Wet-Weston very coarse sand
- Wst-Weston loamy sand, thick surface



Appendix K
Acquisition Area 1B Soils
Frame 2
 Townsend Bombing Range
 McIntosh and Long Counties, Georgia

Source: NRCS 2002a, Based on Lusk 2009, McFadden 2011

This page left blank intentionally.



Frame 1
 Frame 2
 Frame 3
 Frame 4

- Acquisition Area
- Target Area
- Counties

As-Albany loamy fine sand, 0 to 2% slopes
 Ba-Bayboro loam
 Bd-Bladen fine sandy loam
 Bn-Bayboro clay loam
 BJA-Bladen loam and clay loam
 BKA-Bladen-Coxville fine sandy loams

Bn-Blanton sand, 0 to 3% slopes
 Ca-Cape Fear fine sandy loam
 Ch-Chipley sand, 0 to 4 percent slopes
 DmA-Dunbar fine sandy loam, 0 to 2% slopes
 EC-Echaw and Centenary fine sands
 Ee-Ellabelle loamy sand

EoA-Eulonia-Fairhope fine sandy loams, 0 to 2% slopes
 EpA-Eulonia-Fairhope loamy fine sands, thick surfaces, 0 to 2% slopes
 EpB-Eulonia-Fairhope loamy fine sands, thick surfaces, 2 to 5% slopes
 Eu-Eulonia fine sandy loam
 JB-Johnston and Bibb soils
 LpA-Lakeland sand, 0 to 2 percent slopes

LrA-Leon fine sand
 LuA-Lynchburg loamy fine sand
 MBA-Meggett loam
 Ma-Mandarin fine sand
 Me-Mascotte fine sand
 Mt-Meggett fine sandy loam

ObA-Ona fine sand
 Oc-Ocilla loamy fine sand
 PeA-Plummer sands
 Po-Pooler fine sandy loam
 Por-Portsmouth loam
 Pr-Pooler-Bladen complex

Wst-Weston loamy sand, thick surface
 Rb-Riceboro loamy fine sand
 Wa-Wahee sandy loam
 Wes-Weston loamy fine sand



Appendix K
Acquisition Area 3 Soils
Frame 1
 Townsend Bombing Range
 McIntosh and Long Counties, Georgia

Source: NRCS 2002a, Based on Lusk 2009, McFadden 2011

This page left blank intentionally.



Frame 1
Frame 2
 Frame 3
 Frame 4

Acquisition Area

Target Area

Counties

As-Albany loamy fine sand, 0 to 2% slopes
 Ba-Bayboro loam
 Bd-Bladen fine sandy loam
 BbA-Bayboro clay loam
 BJA-Bladen loam and clay loam
 BKA-Bladen-Coxville fine sandy loams

Bn-Blanton sand, 0 to 3% slopes
 Ca-Cape Fear fine sandy loam
 Ch-Chipley sand, 0 to 4 percent slopes
 DmA-Dunbar fine sandy loam, 0 to 2% slopes
 EC-Echaw and Centenary fine sands
 Ee-Ellabelle loamy sand

EoA-Eulonia-Fairhope fine sandy loams, 0 to 2% slopes
 EpA-Eulonia-Fairhope loamy fine sands, thick surfaces, 0 to 2% slopes
 EpB-Eulonia-Fairhope loamy fine sands, thick surfaces, 2 to 5% slopes
 Eu-Eulonia fine sandy loam
 JB-Johnston and Bibb soils
 LpA-Lakeland sand, 0 to 2 percent slopes

LrA-Leon fine sand
 LuA-Lynchburg loamy fine sand
 MBA-Meggett loam
 Ma-Mandarin fine sand
 Me-Mascotte fine sand
 Mt-Meggett fine sandy loam

ObA-Ona fine sand
 Oc-Ocilla loamy fine sand
 PeA-Plummer sands
 Po-Pooler fine sandy loam
 Por-Portsmouth loam
 Pr-Pooler-Bladen complex

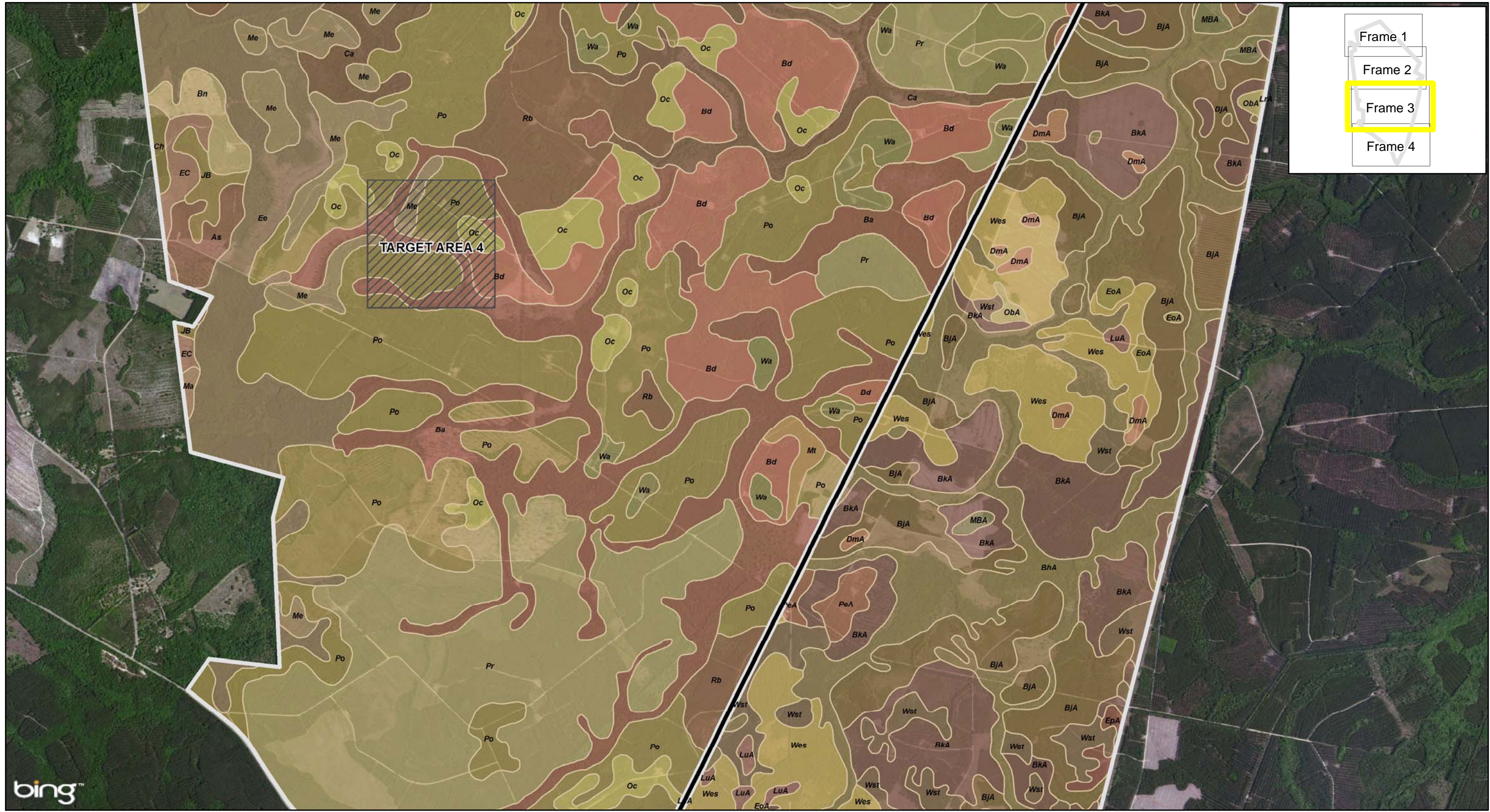
Wst-Weston loamy sand, thick surface
 Rb-Riceboro loamy fine sand
 Wa-Wahee sandy loam
 Wes-Weston loamy fine sand



Appendix K
Acquisition Area 3 Soils
Frame 2
 Townsend Bombing Range
 McIntosh and Long Counties, Georgia

Source: NRCS 2002a, Based on Lusk 2009, McFadden 2011

This page left blank intentionally.



Frame 1
 Frame 2
 Frame 3
 Frame 4

- Acquisition Area
- Target Area
- Counties

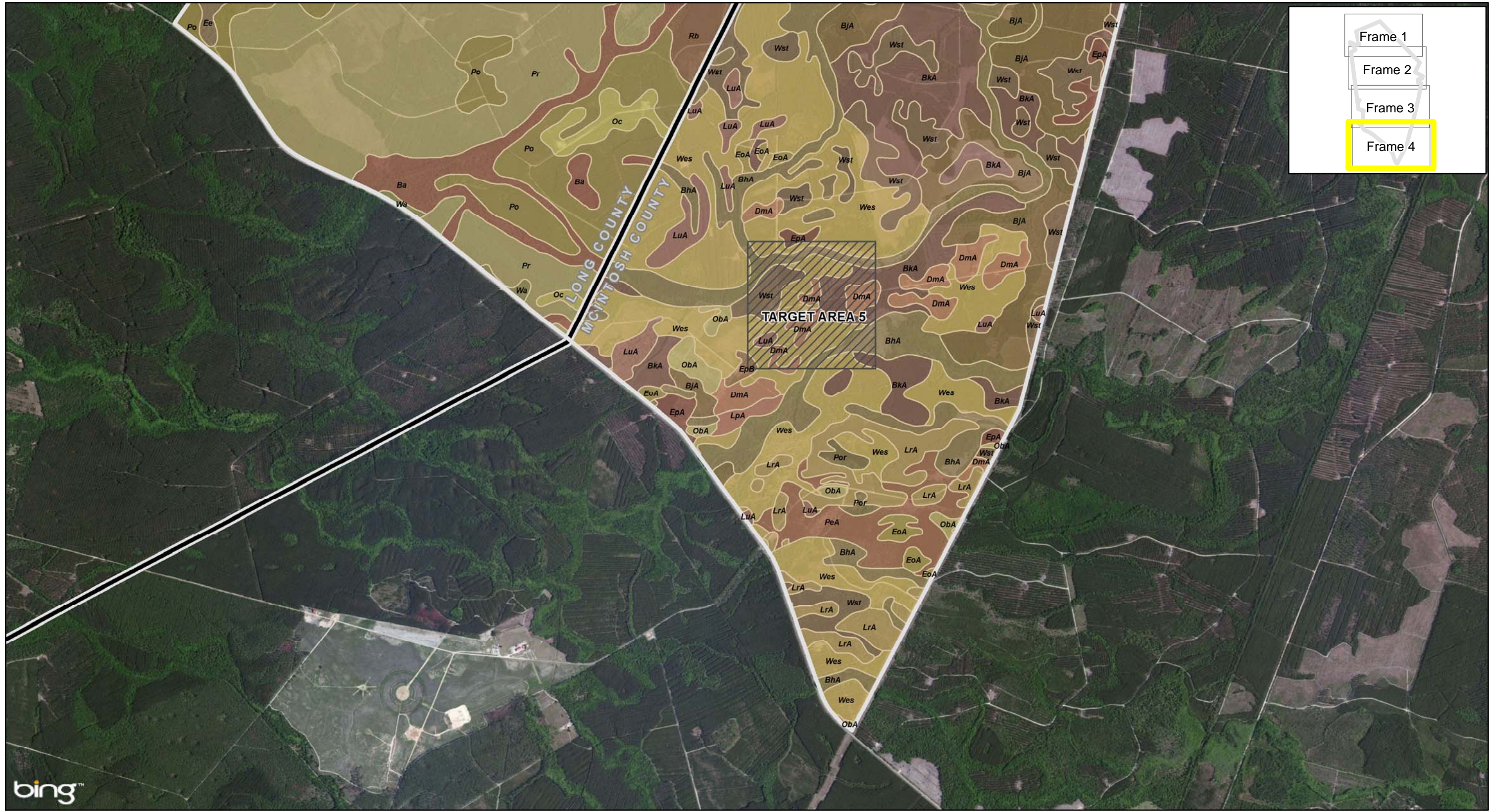
As-Albany loamy fine sand, 0 to 2% slopes	Bn-Blanton sand, 0 to 3% slopes	EoA-Eulonia-Fairhope fine sandy loams, 0 to 2% slopes	LrA-Leon fine sand	ObA-Ona fine sand	Wst-Weston loamy sand, thick surface
Ba-Bayboro loam	Ca-Cape Fear fine sandy loam	EpA-Eulonia-Fairhope loamy fine sands, thick surfaces, 0 to 2% slopes	LuA-Lynchburg loamy fine sand	Oc-Ocilla loamy fine sand	Rb-Riceboro loamy fine sand
Bd-Bladen fine sandy loam	Ch-Chipley sand, 0 to 4 percent slopes	Eu-Eulonia fine sandy loam	MBA-Meggett loam	PeA-Plummer sands	Wa-Wahee sandy loam
BhA-Bayboro clay loam	DmA-Dunbar fine sandy loam, 0 to 2% slopes	JB-Johnston and Bibb soils	Ma-Mandarin fine sand	Po-Pooler fine sandy loam	Wes-Weston loamy fine sand
BJA-Bladen loam and clay loam	EC-Echaw and Centenary fine sands	LpA-Lakeland sand, 0 to 2 percent slopes	Me-Mascotte fine sand	Pr-Portsmouth loam	
BKA-Bladen-Coxville fine sandy loams	Ee-Ellabelle loamy sand		Mt-Meggett fine sandy loam	Pr-Portsmouth-Bladen complex	



Appendix K
Acquisition Area 3 Soils
Frame 3
 Townsend Bombing Range
 McIntosh and Long Counties, Georgia

Source: NRCS 2002a, Based on Lusk 2009, McFadden 2011

This page left blank intentionally.



Frame 1
 Frame 2
 Frame 3
Frame 4

- Acquisition Area
- Target Area
- Counties

- As-Albany loamy fine sand, 0 to 2% slopes
- Ba-Bayboro loam
- Bd-Bladen fine sandy loam
- BhA-Bayboro clay loam
- BJA-Bladen loam and clay loam
- BKA-Bladen-Coxville fine sandy loams

- Bn-Blanton sand, 0 to 3% slopes
- Ca-Cape Fear fine sandy loam
- Ch-Chipley sand, 0 to 4 percent slopes
- DmA-Dunbar fine sandy loam, 0 to 2% slopes
- EC-Echaw and Centenary fine sands
- Ee-Ellabelle loamy sand

- EoA-Eulonia-Fairhope fine sandy loams, 0 to 2% slopes
- EpA-Eulonia-Fairhope loamy fine sands, thick surfaces, 0 to 2% slopes
- EpB-Eulonia-Fairhope loamy fine sands, thick surfaces, 2 to 5% slopes
- Eu-Eulonia fine sandy loam
- JB-Johnston and Bibb soils
- LpA-Lakeland sand, 0 to 2 percent slopes

- LrA-Leon fine sand
- LuA-Lynchburg loamy fine sand
- MBA-Meggett loam
- Ma-Mandarin fine sand
- Me-Mascotte fine sand
- Mt-Meggett fine sandy loam

- ObA-Ona fine sand
- Oc-Ocilla loamy fine sand
- PeA-Plummer sands
- Po-Pooler fine sandy loam
- Por-Portsmouth loam
- Pr-Pooler-Bladen complex

- Wst-Weston loamy sand, thick surface
- Rb-Riceboro loamy fine sand
- Wa-Wahee sandy loam
- Wes-Weston loamy fine sand



Appendix K
Acquisition Area 3 Soils
Frame 4
 Townsend Bombing Range
 McIntosh and Long Counties, Georgia

Source: NRCS 2002a, Based on Lusk 2009, McFadden 2011

This page left blank intentionally.